

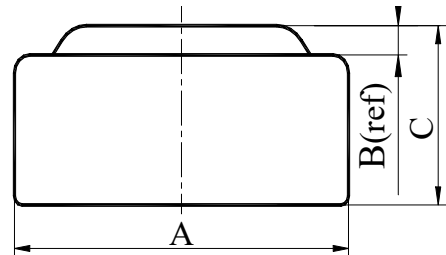


Pollin Electronic GmbH
Max-Pollin-Straße 1
D-85104 Pförring
Tel. +49 (0) 8403 920-920
Fax +49 (0) 8403 920-123
www.pollin.de

TECHNICAL SPECIFICATION

LR621

Chemical System : Alkaline manganese button batteries
Model No. : LR621 (LR60 AG1 164)
Nominal Dimensions : $\Phi 6.80 \times 2.15$ mm
Nominal Voltage : 1.50V
Average Weight : 0.30g
Applications : Watch, Calculator,
Electronic toy, etc.
Shelf Life : Not less than 90% of the
service capacity, following
1st year storage at 20°C.
Loading : 6800 Ω (20°C)
Cut Off Voltage : 0.90V
Capacity : 13mAh



Dimensions	Unit: mm
A	6.70----6.80
B	0.25(ref)
C	1.95----2.15

Typical Discharge Characteristics at 20°C

