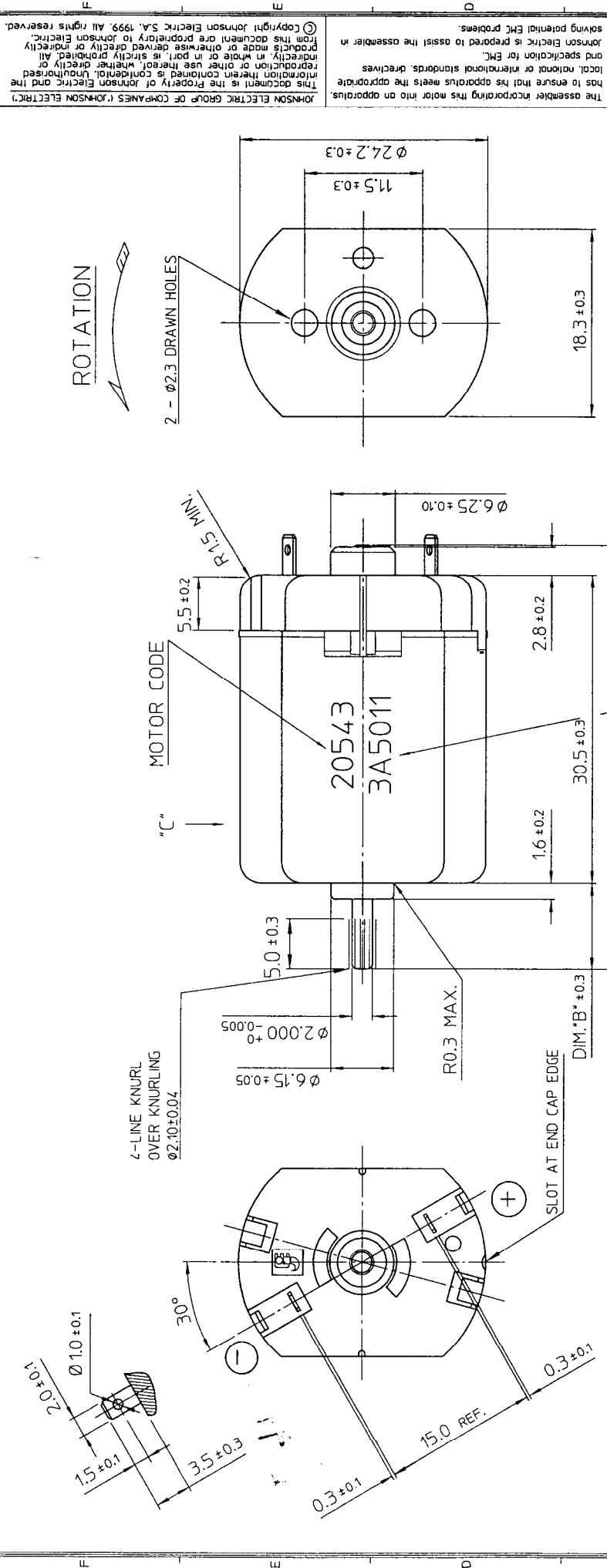


8 7 6 5 4 3 2 1



© Copyright Johnson Electric S.A. 1999. All rights reserved.
 This document is the property of Johnson Electric and the information therein is confidential. Unauthorised reproduction or other use thereof, whether directly or indirectly, in whole or in part, is strictly prohibited. All products made or otherwise derived to Johnson Electric from this document are proprietary to Johnson Electric.

The assembler incorporating this motor into an apparatus has to ensure that his apparatus meets the appropriate local, national or international standards, directives and specification for EMC.

Johnson Electric is prepared to assist the assembler in solving potential EMC problems.

JOHNSON ELECTRIC GROUP OF COMPANIES (JOHNSON ELECTRIC)

ML LI 2000/11/9
 BY DATE
 FIRST ISSUE.

DESCRIPTION
 FINISH
 TOLERANCES
 1 DEC. PLACE ± 0.15
 2 DEC. PLACES ± 0.05
 3 DEC. PLACES ± 0.02
 ANGULAR $\pm 2^\circ$

A3

SCALE 25:1
 DATE 2000/11/9
 ML LI
 DWN. BY
 CHK. BY
 APP. BY
 DWG. NO. 20543-99900

TITLE
 MOTOR OUTLINE

JOHNSON ELECTRIC ENGINEERING LTD.
 A JOHNSON ELECTRIC GROUP COMPANY.
 JOHNSON BUILDING, TAI PO, HONGKONG.

SCN #23061

DIRECT PRINT ONTO REAR HSG. MOTOR CODE & DATE CODE.
 DATE CODE FORMAT REFER TO ESDC-038.

VIEW 'C'

NOTES:-
 1. LENGTH OF SHAFT, DIM. 'A' 42.0 mm.
 2. FRONT EXTENSION, DIM. 'B' 8.45 mm.. MEASURED WITH SHAFT PUSHED AGAINST PLASTIC END CAP.
 3. DIRECTION OF ROTATION : ANTI-CLOCKWISE WHEN VIEWING MOTOR OUTPUT END WITH POSITIVE VOLTAGE APPLIED TO POSITIVE TERMINAL.
 4. END PLAY : 0.5 mm MAX.

ALL DIMENSIONS ARE IN MILLIMETRES
 DO NOT SCALE DRAWING