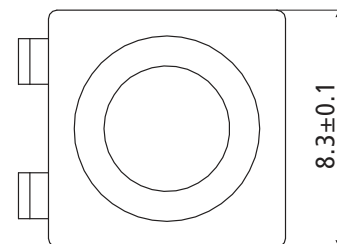
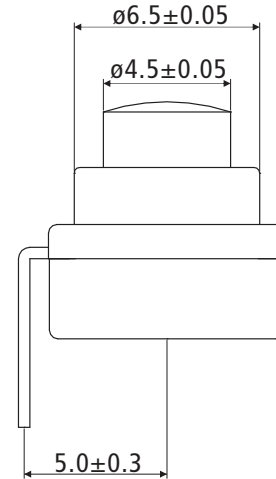
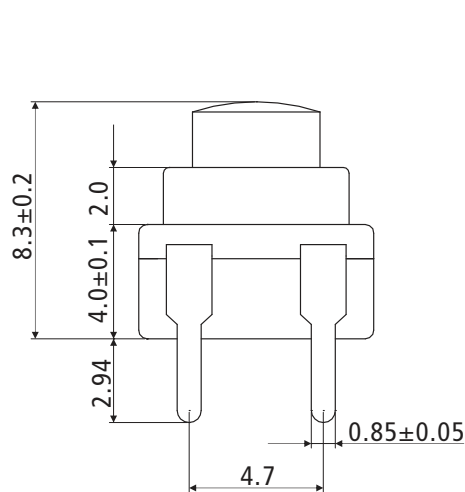


Best. Nr. 421 514

### Push Button Switch, OFF-(ON)



#### Specifications:

Material:

Frame: PBT, 94V-2

Cap: POM

Terminal: Brass Tin plated

Color: Black + Black

Mounting type: PCB

Voltage rating: 30 V/DC

Current rating: 1 A (max.)

Function: OFF-(ON)

Operating force: 500±50gf

Operating Temp.: -25°C ~ 85°C