

1 2 3 4 5 6 7 8 9 10 11 12 13 14

A



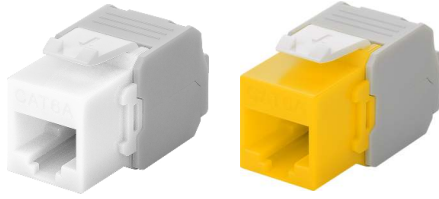
B

C



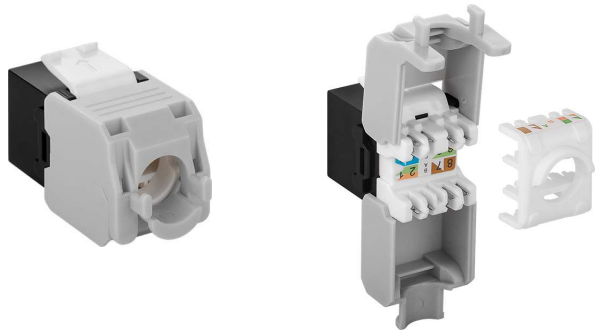
D

E

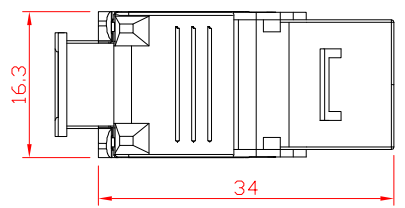
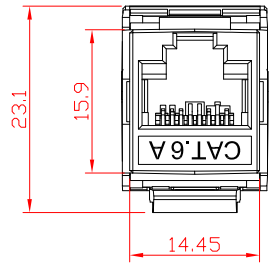
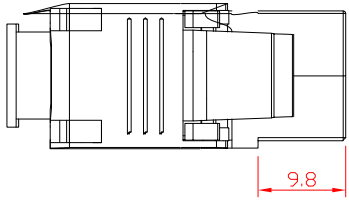


F

G



H



A

B

C

D

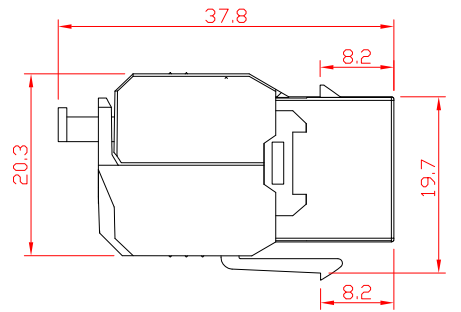
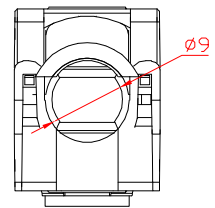
E

F

G

H

Art.-Nr. Item No.	Farbe colour
90687	grün green
90688	blau blue
90689	rot red
90690	orange orange
90691	gelb yellow
90692	schwarz black
90693	hellgrau light grey
90867	weiß white



Keystone Modul RJ45

- Anschlüsse sind TIA 568A/B farbkodiert
- PoE nach IEEE 802.3at
- nicht geeignet für Litzen Draht
- Betriebstemperatur: -20°C ~ +85°C
- Massivkabel: 0,48 - 0,65 mm, AWG 22 - 26
- Außendurchmesser Kabel: 5,0 mm - 9,0 mm
- Anschlüsse: RJ45-Buchse (8P8C), Klemmleiste für LSA Montage PC
- Material Gehäuse: PC
- Dauerhaftigkeit: RJ45: 750x min. Steckverbindung: LSA: 200x min.
- Material Kontakte: Phosphorbronze
- Nennspannung: 125 V ~
- Nennstrom: 1,5 A
- Kontaktwiderstand: 10 MΩ max.
- Isolationswiderstand: 1000 MΩ min. @ 500 V =
- Spannungsfestigkeit: 750 V ~ RMS, 60 Hz, 1 min
- Konformität: REACH, RoHS

KeyStone RJ45 module

- connectors have TIA 568A/B colour code
- PoE per IEEE 802.3at
- not suitable for stranded wire
- operation temperature: -20°C ~ +85°C
- Solid cables: 0.48 - 0.65 mm, AWG 22 - 26
- Outer diameter cable: 5.0 mm - 9.0 mm
- Connectors: RJ45 socket (8P8C), terminal strip for LSA mounting PC
- Material housing: PC
- Mating durability: RJ45: 750x min. LSA: 200x min.
- Material contacts: phosphor bronze
- Rated voltage: 125 V ~
- Rated current: 1.5 A
- Contact resistance: 10 MΩ max.
- Insulation resistance: 1000 MΩ min. @ 500 V =
- Dielectric strength: 750 V ~ RMS, 60 Hz, 1 min
- Conformity: REACH, RoHS

Änderungen

Datum	Name	gez.:	Datum	Name
		gez.:	10.02.2021	ir
		gepr.:	10.02.2021	aw
		Norm:		
Änderungen vorbehalten / Subject to change				

Bezeichnung	NET Keystone CAT 6a UTP LSA xxx
Zeichnungs-Nr.:	90687, 90688, 90689, 90690, 90691, 90692, 90693, 90867



Blatt
1/1

von

1 2 3 4 5 6 7 8 9 10 11 12 13 14