

# Temperatursicherungen 770.000-X Temperature-Fuses AC



Ø 4,0 x 27\* mm

Version: kurz-lang / short-long



**Spannung** 250 V **Strom** 10 A **Typ** Axial  
*Voltage Current Type*



Norm / Standard:

IEC 60691

Anschluss / Connection:

Rundstifte (kurz-lang),  
Oberfläche verzinnt, steckbar und lötlbar /  
Round pins (short-long),  
Surface tin-plated, pluggable and solderable

C: Verzinnertes Kupfer / Tin plated copper  
D: Versilbertes Kupfer / Silver plated copper

Isolationswiderstand / Insulation resistance: > 0,2 MΩ

Verpackungsmöglichkeiten / Packing options: 2.000 St. = lose geschüttet in Polybeutel  
2.000 pcs. = bulk in plastic bag

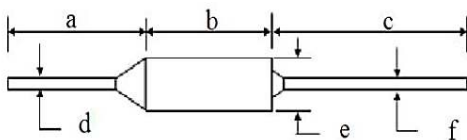
## Bemessungswerte / Ratings:

Art. No.	T <sub>N</sub> <sup>1)</sup> [°C]	T <sub>H</sub> [°C]			T <sub>max</sub> [°C]		
		UL	CCC	VDE	UL	CCC	VDE
770.073-X	73	58	58	58	175	150	175
770.077-X	77	62	62	62	175	150	175
770.084-X	84	69	69	69	175	150	175
770.094-X	94	79	79	79	175	150	175
770.099-X	99	84	84	84	175	150	175
770.104-X	104	90	90	88	175	150	175
770.113-X	113	98	98	98	175	150	175
770.117-X	117	102	102	102	175	160	175
770.121-X	121	106	106	106	175	160	175
770.133-X	133	119	119	119	215	160	215
770.142-X	142	127	127	127	215	160	215
770.157-X	157	142	143	137	250	172	250
770.172-X	172	157	157	157	260	189	260
770.184-X	184	169	169	169	260	210	260
770.192-X	192	177	177	177	390	300	390
770.216-X	216	191	201	201	380	380	390
770.229-X	229	201	201	201	390	380	390
770.240-X	240	201	201	201	450	380	450
770.257-X	257	200	/	/	450		

I <sub>N</sub> [A] / U <sub>N</sub> [V]		
UR		10 A / 250 V AC
CSA		10 A / 250 V AC
VDE		10 A / 250 V AC
PSE		10 A / 250 V AC
CCC		10 A / 250 V AC
Korea		10 A / 250 V AC

## Legende / Caption:

I<sub>N</sub> = Bemessungsstrom / Rated current  
U<sub>N</sub> = Bemessungsspannung / Rated voltage  
T<sub>N</sub> = Bemessungstemperatur / Rated functioning temp.  
T<sub>H</sub> = Haltezeittemperatur / Holding temperature  
T<sub>max</sub> = max. Grenztemperatur / max. temp. limit



## Maße / Dimensions:

**a** Länge Anschluss kurz / Length short lead ± 1,0 mm 8 - 68 mm  
**b** Gehäuse-Länge / Case length ± 1,0 mm 11 mm  
**c** Länge Anschluss lang / Length long lead ± 1,0 mm 8 - 70 mm  
**d, f** Durchmesser Leitung / Case lead diameter ± 1,0 mm 1,0 mm  
**e** Gehäusedurchmesser / Case diameter 4,0 mm