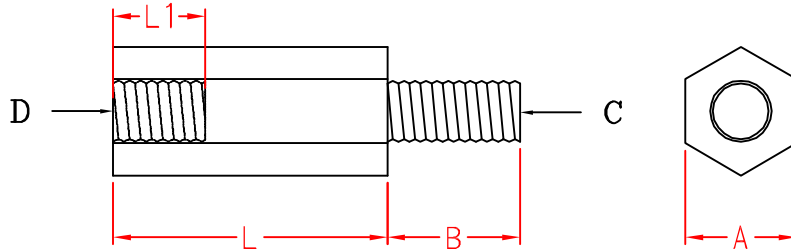


HTS TYPE



| ITEM NO. | L | L1 | B | A | C/D |
|----------|-----------|-----------|----------|----------|--------|
| HTS-205 | 5.0±0.25 | 4.0±0.25 | 5.0±0.25 | 4.0±0.25 | M2X0.4 |
| HTS-208 | 8.0±0.25 | 6.0±0.25 | 5.0±0.25 | 4.0±0.25 | |
| HTS-210 | 10.0±0.35 | 6.0±0.25 | 5.0±0.25 | 4.0±0.25 | |
| HTS-215 | 15.0±0.35 | 6.0±0.25 | 5.0±0.25 | 4.0±0.25 | |
| HTS-306 | 6.0±0.25 | 5.3±0.25 | 6.0±0.25 | 5.6±0.25 | M3X0.5 |
| HTS-308 | 8.0±0.25 | 7.5±0.25 | 6.0±0.25 | 5.6±0.25 | |
| HTS-310 | 10.0±0.35 | 6.5±0.25 | 6.0±0.25 | 5.6±0.25 | |
| HTS-312 | 12.7±0.35 | 10.0±0.35 | 6.0±0.25 | 5.6±0.25 | |
| HTS-315 | 15.0±0.35 | 10.0±0.35 | 6.0±0.25 | 5.6±0.25 | |
| HTS-317 | 17.0±0.35 | 10.0±0.35 | 6.0±0.25 | 5.6±0.25 | |
| HTS-318 | 18.0±0.35 | 10.0±0.35 | 6.0±0.25 | 5.6±0.25 | M4X0.7 |
| HTS-320 | 20.0±0.5 | 10.0±0.35 | 6.0±0.25 | 5.6±0.25 | |
| HTS-322 | 22.0±0.5 | 10.0±0.35 | 6.0±0.25 | 5.6±0.25 | |
| HTS-325 | 25.0±0.5 | 10.0±0.35 | 6.0±0.25 | 5.6±0.25 | |
| HTS-330 | 30.0±0.5 | 10.0±0.35 | 6.0±0.25 | 5.6±0.25 | M4X0.7 |
| HTS-410 | 10.1±0.35 | 10.0±0.35 | 6.0±0.25 | 7.0±0.25 | |
| HTS-413 | 13.0±0.35 | 7.0±0.25 | 6.0±0.25 | 7.0±0.25 | |
| HTS-415 | 15.0±0.35 | 10.0±0.35 | 6.0±0.25 | 7.0±0.25 | |
| HTS-419 | 19.0±0.35 | 10.0±0.35 | 6.0±0.25 | 7.0±0.25 | |
| HTS-425 | 25.0±0.5 | 10.0±0.35 | 6.0±0.25 | 7.0±0.25 | |
| HTS-430 | 30.0±0.5 | 10.0±0.35 | 6.0±0.25 | 7.0±0.25 | |

承認
KSS
98.07.21
邱平裕

審查

製圖
KSS
98.07.21
謝文通

設計

中文名
六角隔離柱

MATERIAL: UL 94V-2
NYLON 66

ITEM NO.
HTS TYPE

SCALE

FINISH

NAME
HEXAGONAL TAREADED SPACER



(. . .)

TOLERANCE
AS FIGURE



07-15-2010
DATE

REVISIONS K003

R.NO.

使用機種



凱士士企業股份有限公司

請勿實測圖面