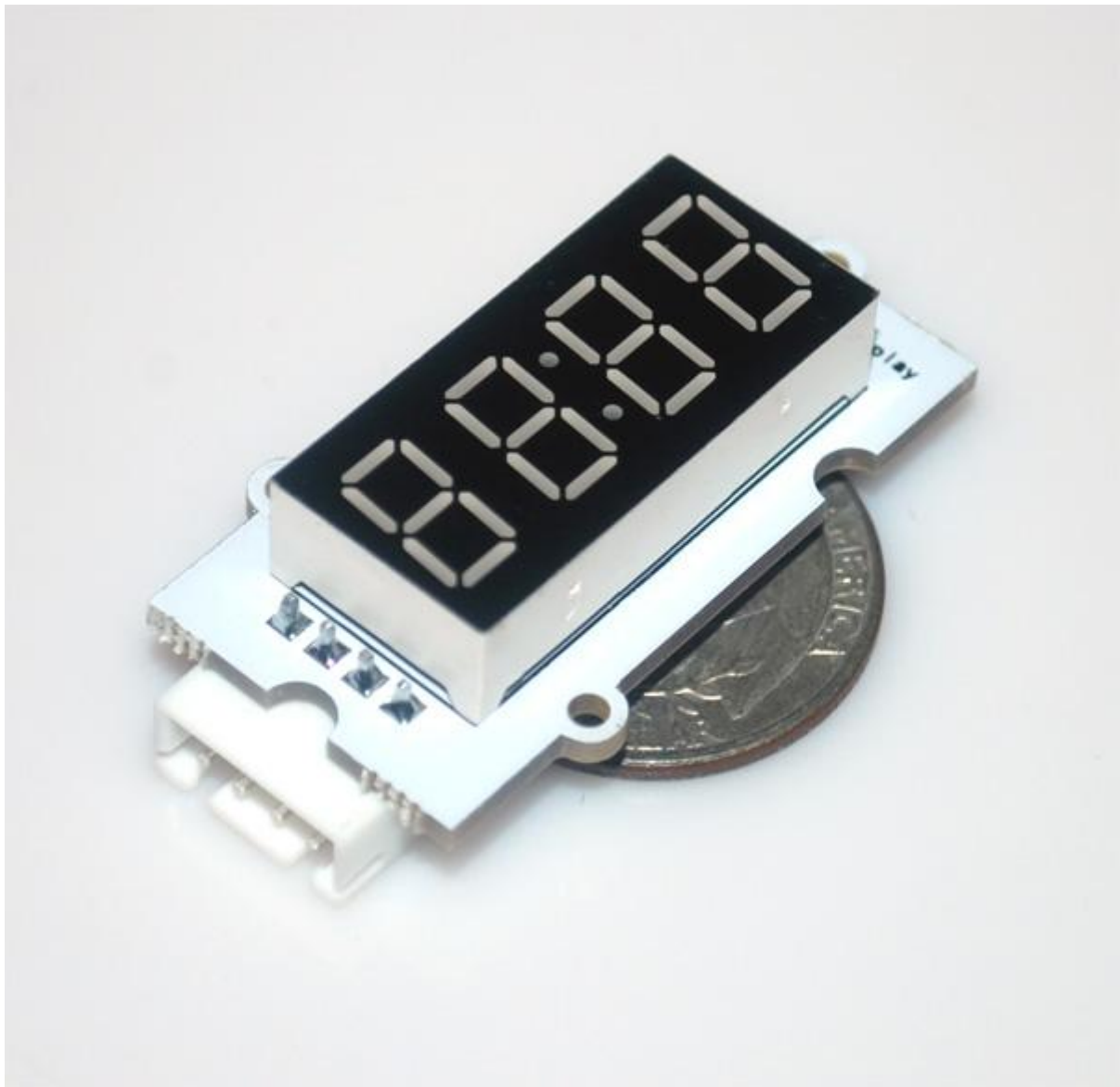


Linker Kit Platine mit Digitalanzeige (4 Stellen / 7 Segmente)

Introduction

Linker 4-digit 7-segment module uses a chipset of TM1637 to drive a 12-pin 4-digit command anode 7-segment LED. The MCU only needs two GPIO lines to control it.

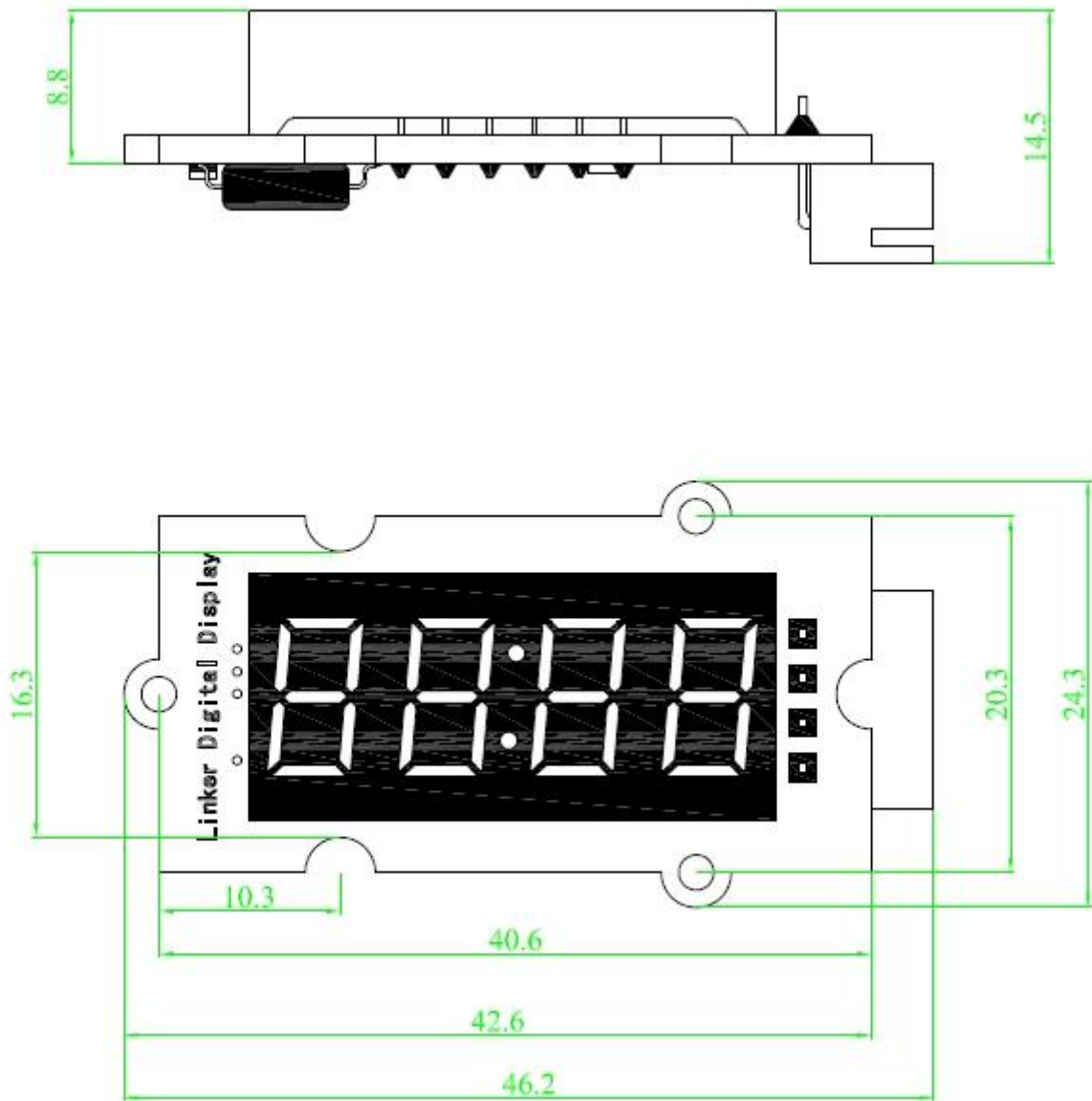


Features

Dimensions: 46.2×24.3×14.5mm

Net weight: 7g

Dimension



Schematic

- [Schematic](#)

Sample Code and Setup

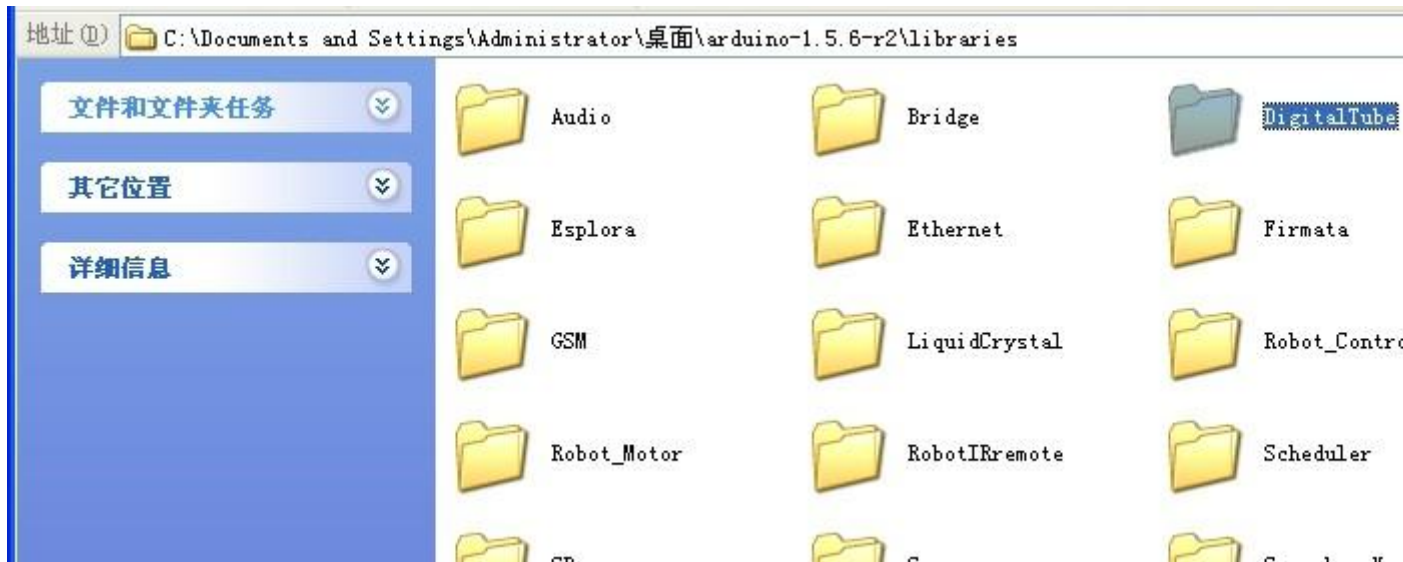
Hardware

We connect according to the following:

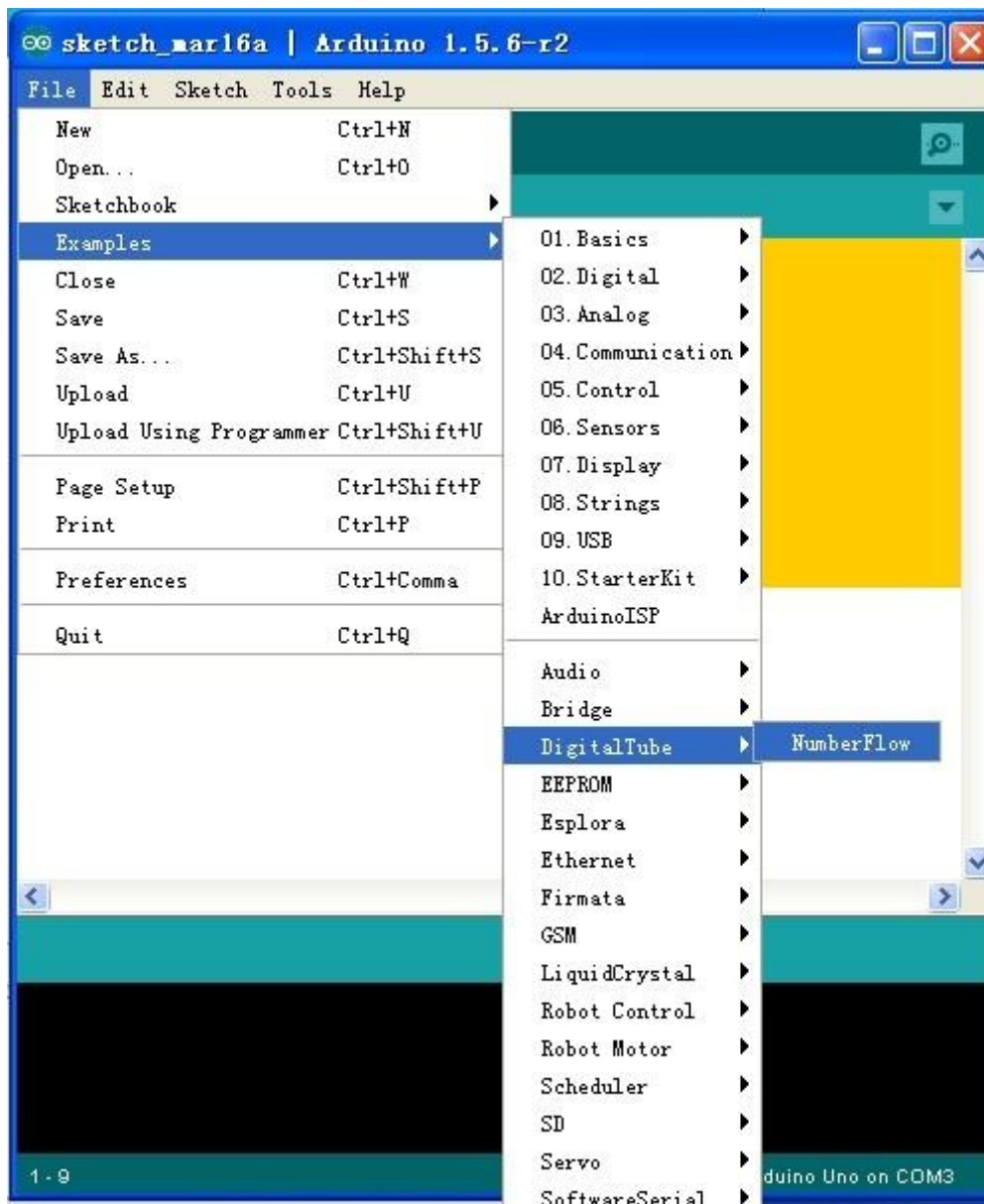
- D2 of Arduino to CLK of Linker 4-digit 7-segment module
- D3 of Arduino to DIO of Linker 4-digit 7-segment module
- +3.3V of Arduino to VCC of Linker 4-digit 7-segment module
- GND of Arduino to GND of Linker 4-digit 7-segment module

Software

The source files for linker kit is hosted at [https://github.com/linksprite/Linkerkit/tree/master/Linker_4D7SLED github]. Please download and put under the library path of Arduino IDE, and rename the directory name as DigitalTube as shown below:



Launch the Arduino IDE and select the example code as below:



Weitere Informationen unter: linksprite.com