

LogiLink®

Speaker Cable with Banana Plugs

Art. No.: CA1210
CA1211



Ideal for connecting speakers to amplifiers and AV receivers securely with banana plugs.



Nylon Braided Cable

2 x 2.5mm² speaker cable with black nylon mesh grid.



Gold Plated Connector

Gold plating for Clear Audio.

Best Connectivity



RoHS
compliant



* The specifications and pictures are subject to change without notice.
* All trade names referenced are the registered namework of their respective owners.

LogiLink®

Speaker Cable with Banana Plugs

Art. No.: CA1210
CA1211



Color Code Rings

For easy polarity identification.



Banana Plugs

Soldered banana plug terminations
for a secure connection with your speaker's
terminal.

Best Connectivity



* The specifications and pictures are subject to change without notice.
* All trade names referenced are the registered network of their respective owners.

LogiLink®

Speaker Cable with Banana Plugs

Art. No.: CA1210
CA1211

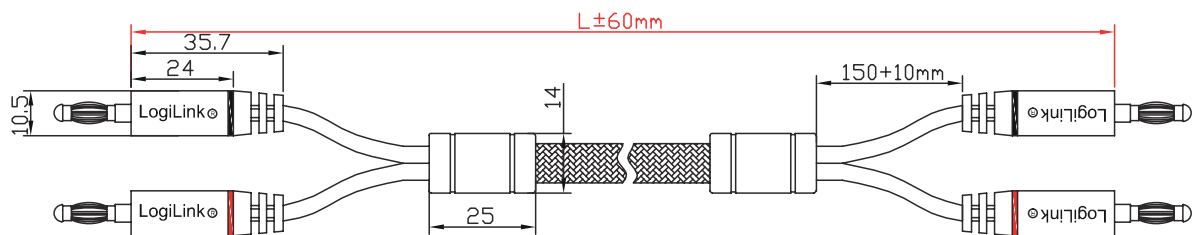


Specifications:

Connection 1	Banana plug with red ring
Connection 2	Banana plug with white ring
Inner Conductor Material	Cu (copper)
Cable Type	2 x 2.5mm ² speaker cable with black nylon mesh grid

Art-No.	Cable Length	EAN Code
CA1210	3m	4052792054279
CA1211	5m	4052792054286

Technical Drawing:



Unit:mm

Package Content:

» 1 x Speaker Cable with Banana Plugs



Package Information:

Art-No.	Packing Dimension	Packing Weight	Carton Dimension	Carton Q'ty	Carton Weight
CA1210	235 x 255 x 35mm	0.37kg	500 x 270 x 520mm	50pcs	19.5kg
CA1211	235 x 255 x 45mm	0.65kg	500 x 270 x 520mm	30pcs	20.5kg



* The specifications and pictures are subject to change without notice.
*All trade names referenced are the registered trademark of their respective owners.