

Temperatursicherungen 770.000-X Temperature-Fuses AC



Ø 4,0 x 27* mm

Version: kurz-lang / short-long



Spannung Voltage	250 V	Strom Current	10 A	Typ Type	Axial
----------------------------	--------------	-------------------------	-------------	--------------------	--------------



Norm / Standard:

IEC 60691

Anschluss / Connection:

Rundstifte (kurz-lang),
Oberfläche verzinnt, steckbar und lötlbar /
Round pins (short-long),
Surface tin-plated, pluggable and solderable

C: Verzinnertes Kupfer / Tin plated copper
D: Versilbertes Kupfer / Silver plated copper

Isolationswiderstand / Insulation resistance: > 0,2 MΩ

Verpackungsmöglichkeiten / Packing options: 2.000 St. = lose geschüttet in Polybeutel
2.000 pcs. = bulk in plastic bag

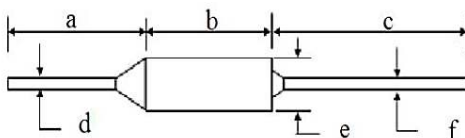
Bemessungswerte / Ratings:

Art. No.	T _N ¹⁾ [°C]	T _H [°C]			T _{max} [°C]		
		UL	CCC	VDE	UL	CCC	VDE
770.073-X	73	58	58	58	175	150	175
770.077-X	77	62	62	62	175	150	175
770.084-X	84	69	69	69	175	150	175
770.094-X	94	79	79	79	175	150	175
770.099-X	99	84	84	84	175	150	175
770.104-X	104	90	90	88	175	150	175
770.113-X	113	98	98	98	175	150	175
770.117-X	117	102	102	102	175	160	175
770.121-X	121	106	106	106	175	160	175
770.133-X	133	119	119	119	215	160	215
770.142-X	142	127	127	127	215	160	215
770.157-X	157	142	143	137	250	172	250
770.172-X	172	157	157	157	260	189	260
770.184-X	184	169	169	169	260	210	260
770.192-X	192	177	177	177	390	300	390
770.216-X	216	191	201	201	380	380	390
770.229-X	229	201	201	201	390	380	390
770.240-X	240	201	201	201	450	380	450
770.257-X	257	200	/	/	450		

I _N [A] / U _N [V]		
UR		10 A / 250 V AC
CSA		10 A / 250 V AC
VDE		10 A / 250 V AC
PSE		10 A / 250 V AC
CCC		10 A / 250 V AC
Korea		10 A / 250 V AC

Legende / Caption:

I_N = Bemessungsstrom / Rated current
U_N = Bemessungsspannung / Rated voltage
T_N = Bemessungstemperatur / Rated functioning temp.
T_H = Haltemperatur / Holding temperature
T_{max} = max. Grenztemperatur / max. temp. limit



Maße / Dimensions:

a Länge Anschluss kurz / Length short lead ± 1,0 mm 8 - 68 mm
b Gehäuse-Länge / Case length ± 1,0 mm 11 mm
c Länge Anschluss lang / Length long lead ± 1,0 mm 8 - 70 mm
d, f Durchmesser Leitung / Case lead diameter ± 1,0 mm 1,0 mm
e Gehäusedurchmesser / Case diameter 4,0 mm