

THIS DRAWING IS UNPUBLISHED.

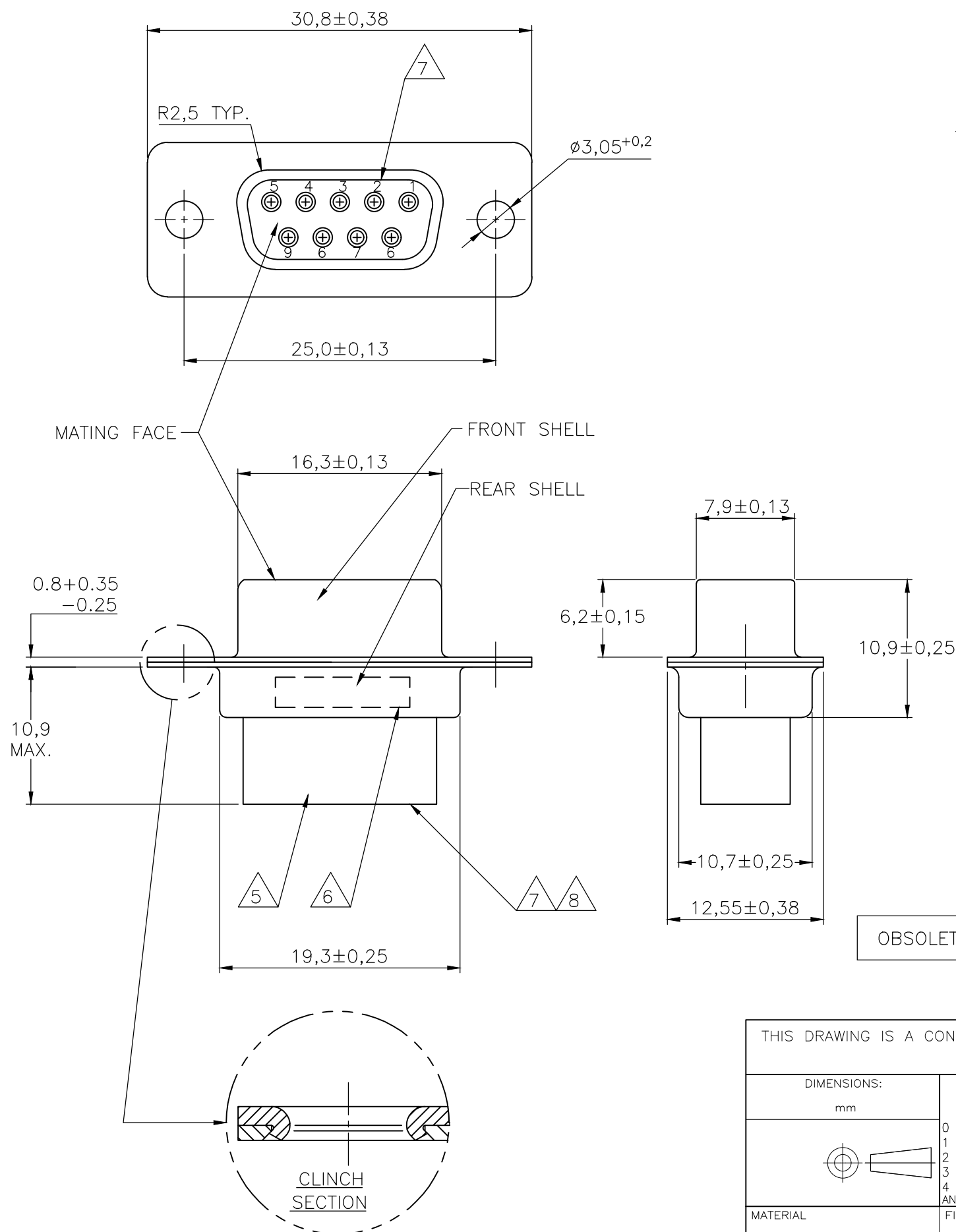
RELEASED FOR PUBLICATION

REVISIONS

© COPYRIGHT - By -

ALL RIGHTS RESERVED.

P	LTR	DESCRIPTION	DATE	DWN	APVD
P		REVISED PER ECO-17-014522	26APR2018	AP	DG



NOTES:

- 1 THIS RECEPTACLE ACCEPTS SIZE 20 REC. CONTACTS.
- 2 MAXIMUM WIRE INSULATION RECOMMENDED FOR USE WITH THIS RECEPTACLE IS 1,73 DIA. MAX..
- 3 RETENTION TINES ARE AN INTEGRAL PART OF INSERT.
- 4 FOLLOWING INSERTION/REMOVAL TOOLS ARE RECOMMENDED FOR USE WITH THESE CONNECTORS:
 32-28AWG/28-24AWG CONTACTS
 91067-3 INSERTION/REMOVAL
 726363-1 INSERTION ONLY
 24-20AWG CONTACTS
 726363-1 INSERTION ONLY
 726364-1 REMOVAL ONLY
- 5 INSERTS: GLASSFILLED SELF-EXTINGUISHING PBT, COLOR BLACK.
- 6 TE , TE CONNECTIVITY PARTNUMBER AND DATE CODE; INK STAMPED.
- 7 RAISED CAVITY IDENTIFICATION 0,8 HIGH.
- 8 RAISED CAVITY IDENTIFICATION NUMBERS ON WIRE SIDE ARE WHITENED FOR 164531-9.

OBSOLETE	BRIGHT TIN	BRIGHT TIN	STEEL	164531-9	8
	BRIGHT TIN	BRIGHT TIN	STEEL	164531-4	
	PLATING FRONT SHELL	PLATING REAR SHELL	MATERIAL SHELLS	PART NUMBER	

THIS DRAWING IS A CONTROLLED DOCUMENT.		DWN D. KESSLER 11FEB99	STE TE Connectivity		
DIMENSIONS: mm		CHK W. SOOMERS			
TOLERANCES UNLESS OTHERWISE SPECIFIED:		APVD W. SOOMERS	NAME 9 POS HDP-20 RECEPTACLE CONNECTOR SIZE 1		
0 PLC ± -		PRODUCT SPEC	-		
1 PLC ± 0,2		APPLICATION SPEC	-		
2 PLC ± -		WEIGHT	SIZE A3	CAGE CODE -	DRAWING NO C-164531
3 PLC ± -		MATERIAL	RESTRICTED TO -		
4 PLC ± -		FINISH	SCALE NTS		
ANGLES ± 2°			SHEET 1 OF 1		
-			REV P		
-			CUSTOMER DRAWING		