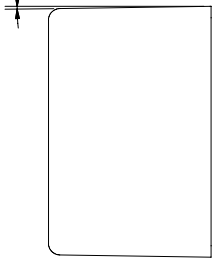
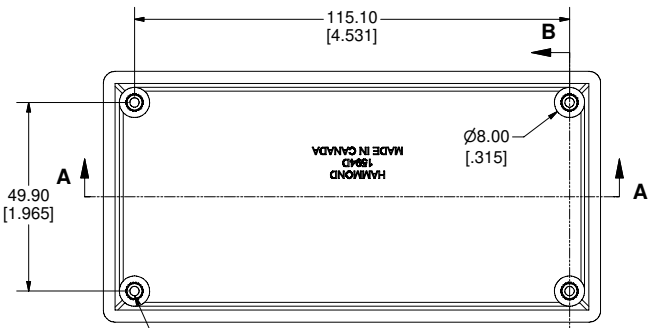


DRAFT ANGLE OF APPROXIMATELY 1°

D

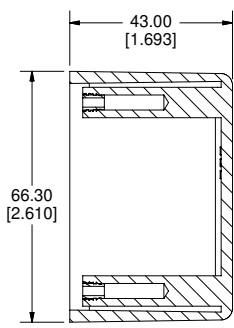


SIDE VIEW OF BOX



TOP VIEW OF BOX

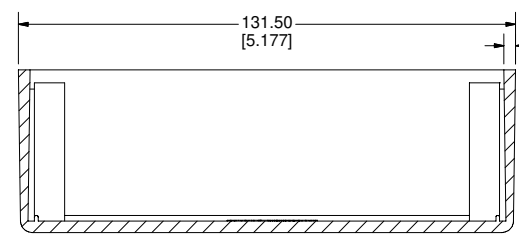
M3 X 0.5 - 6H x 5.75  
THREADED HOLES



SECTION B-B  
SCALE 1 : 1



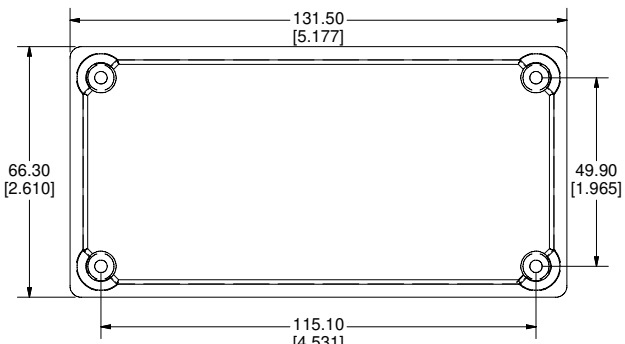
C



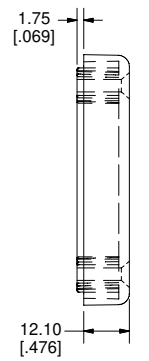
SECTION A-A  
SCALE 1 : 1

AVERAGE WALL THICKNESS  
3.10  
[.122]

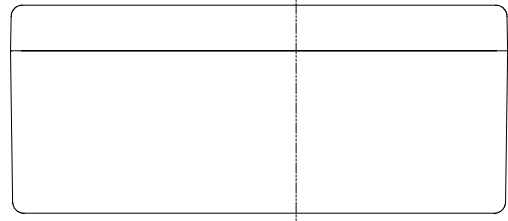
B



BOTTOM OF LID

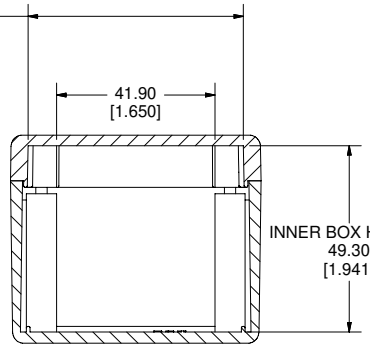


SIDE OF LID



SIDE VIEW OF ASSEMBLY

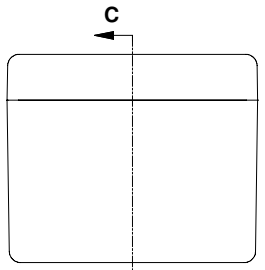
NARROWEST INSIDE DIAMETER  
56.97  
[2.243]



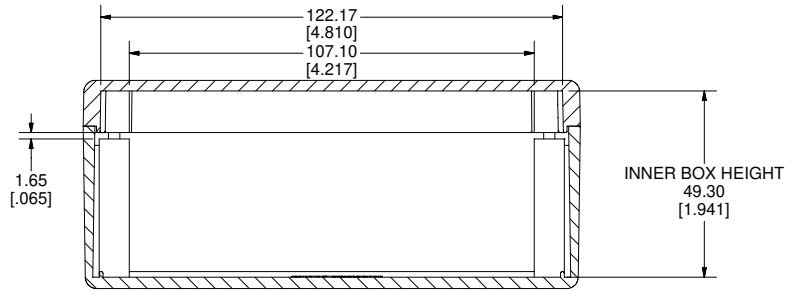
SECTION D-D  
SCALE 1 : 1

B

A



END VIEW OF ASSEMBLY



SECTION C-C  
SCALE 1 : 1

INNER BOX HEIGHT  
49.30  
[1.941]

1594D Enclosure	
FLAME RETARDANT ABS	
Black - RAL 9011	1594DBK
Grey - RAL 7018	1594DGY
NON-FLAME RETARDANT ABS	
Grey - RAL 7035	1594DSGY
Black - RAL 9011	1594DSBK
LIQUID RESISTANT	
Black - RAL 9011	1594DWBK
ACCESSORIES	
Cover Screws Non-Flame Retardant (pkg. 100) [#4 x 1" Self-Tapping]	1594TS100
Cover Screws Flame Retardant (pkg. 100) [M3 - 0.5 x 20mm]	1594MS100
Cover Screws Liquid Resistant (pkg. 100) [M3 - 0.5 x 20mm]	1594WMS100
Circuit Board Holders	(See 1594Z Series)

**HAMMOND  
MANUFACTURING™**

**1594D**

www.hammondmfg.com

Enclosures can be Factory Modified (Milling, Drilling, Printing etc.)  
Solid models of this enclosure available in STEP or IGES.  
Contact Factory [mjm@hammondmfg.com](mailto:mjm@hammondmfg.com)

4

3

2

1