

### SPECIFICATION:

Operating Current (Nom.):	1 A
Operating Temperature:	-25°C to 85°C
Insulation Resistance (Min.):	1000 MΩ
Contact Resistance (Max.):	15 mΩ
Dielectric Strength:	500 Vac

### MATERIAL:

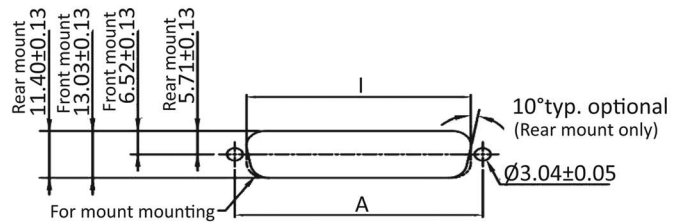
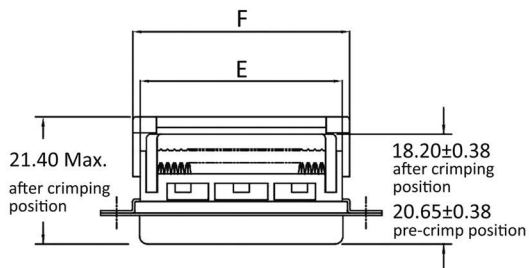
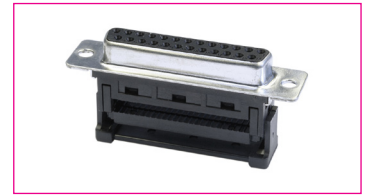
Material (Housing):	steel, tin plated
Flammability Class:	UL 94 V-0
Material (Insulation):	PBT
Material (Contact Area):	brass, gold plated

### HANDLING:

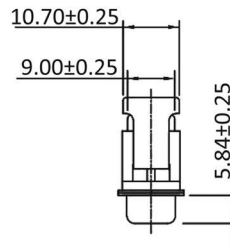
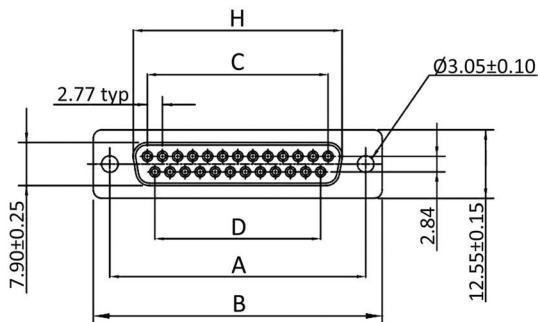
Terminal:	IDC
Packaging:	tray

### TOLERANCE:

.X:	± 0.38
.XX:	± 0.25



Recommended panel cutout dimensions



### Dimensions

Number of Contacts:	A:	B:	C:	D:	E:	F:	H:	I Frontseite:	I Rückseite:
9	24.99	30.8	11.08	8.31	16.1	18.6	16.33	22.2	20.47
15	33.32	39.1	19.39	16.62	24	26.6	24.66	30.53	28.8
25	47.04	53.09	33.24	30.47	38.14	40.9	38.38	44.27	42.52
37	63.5	69.4	49.86	47.09	54.6	57.1	54.84	60.73	59.08

### Order Information

Identifier: <b>BU</b>	No. of Contacts: <b>#</b>	Contact Plating: <b>#</b>	Shell: <b>K</b>	/	Mounting: <b>F</b>	Insulator Colour: <b>black</b>
D-Sub Female IDC	9: 9 poles 15: 15 poles 25: 25 poles 37: 37 poles	S: selective gold plated * G: gold plated A: 5 μ" gold	metal shell with plastic strain relief		mounting hole	

\* = Standard