

THIS DRAWING IS UNPUBLISHED.

RELEASED FOR PUBLICATION

© COPYRIGHT

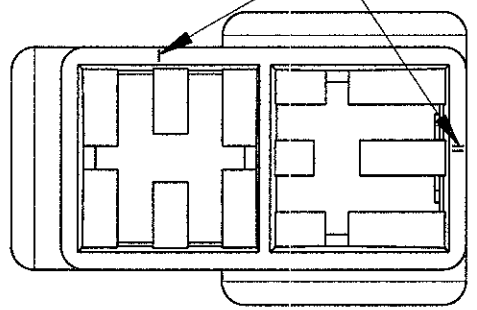
ALL RIGHTS RESERVED.

LOC DIST

REVISIONS

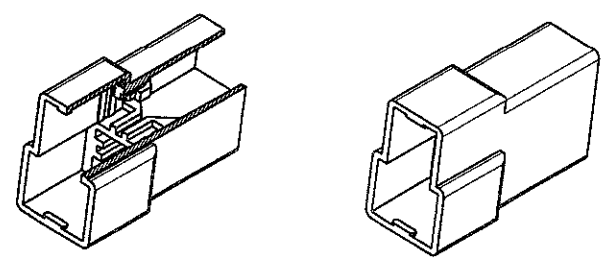
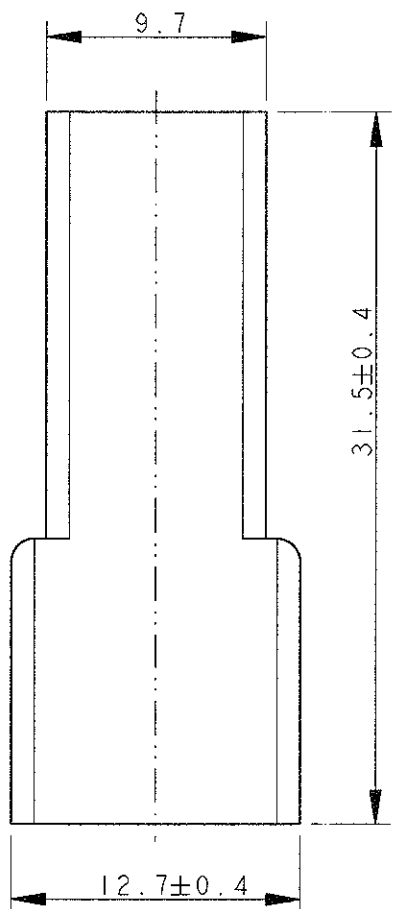
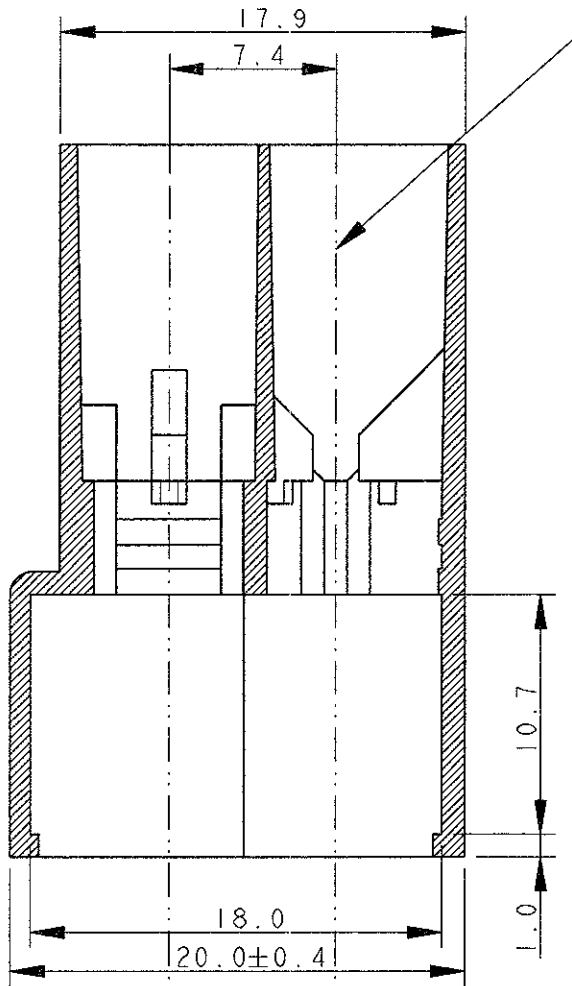
P	LTR	DESCRIPTION	DATE	DWN	APVD
		AB6 REVISED PER ECO-11-005140	01APR11	RK	HMR

CIRCUIT IDENTIFICATION



TYPICAL CAVITY FOR FASTIN-FASTON CONN. .250" SR. TAB CTC

SECTION A-A



SCALE 1:1

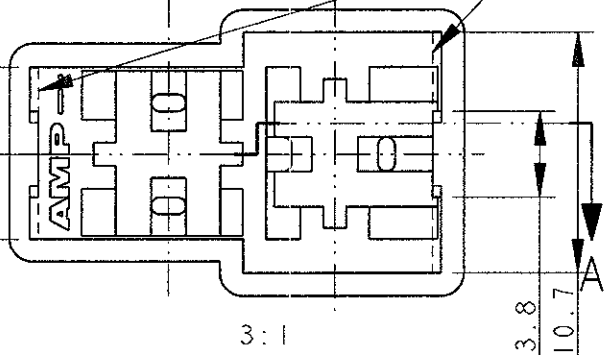
2 OBSOLETE PARTS: OBSOLETE CIS STREAMLINING PER D.RENAUD/D.SINISI

2 OBSOLETE

OBSOLETE

NOTES	COLOUR	MATERIAL	PART NUMBER	REV
	BLACK	POLYAMIDE 6.6	0-180908-5	AB
	YELLOW		0-180908-4	AB
	BLUE		0-180908-3	AB
	GREEN		0-180908-2	AB
	RED		0-180908-1	AB
	NATURAL	NYLON 606 ZYTEL 101L	0-180908-0	AB
UL APPROVED	BLACK		1-180908-5	O
	YELLOW		1-180908-4	AB
	GREEN		1-180908-2	AB
	NATURAL		1-180908-0	AB

1 ALTERNATIVE SHAPE : ACCEPTED ONE RETENTION RIB FOR THE TOTAL LENGHT OF THE HSG.



DOWNSIDE: H. YAALI 08JUL2002		TE Connectivity	
CHECKED: C. TARTARI			
DIMENSIONS: mm		NAME: FASTIN-FASTON* Connector, .250" sr. TAB HOUSING 2 WAY	
TOLERANCES UNLESS OTHERWISE SPECIFIED:		SIZE: A3	
0 PLC ±-		CAGE CODE: 00779	
1 PLC ±0.3		DRAWING NO: C-180908	
2 PLC ±-		RESTRICTED TO: -	
3 PLC ±-		SCALE: 3:1	
4 PLC ±-		SHEET: 1 OF 1	
ANGLES ±2°		REV: AB6	
FINISH: SEE TABLE		CUSTOMER DRAWING	
MATERIAL: SEE TABLE		WEIGHT: 2.3 g	