

**battery type:** Alkaline Manganese (Mercury free)  
**battery size:** IEC: LR20; JIS: AM-1; ANSI: 13A; MN1300; Mono  
**chemical system:** Zn / KOH-H<sub>2</sub>O / MnO<sub>2</sub>

**nominal voltage:** 1.5 V  
**open circuit voltage:** 1.58...1.68 V new battery  
 1.55...1.68 V after 1 year storage at 20°C

**capacity rated:** 16000 mAh all measurements at 20°C ambient  
 discharge at 25mA load; 24h/day  
 End Voltage (EV): 0.8V  
 13500 mAh discharge at 2.2ohms load; 1h/day  
 End Voltage (EV): 0.8V

**minimum:** 17.7 h at 2.2ohms constant resistance discharge  
 (for IQC measurement) 24h/d; End Voltage (EV): 0.9V

**typical service output**

Load	2.2Ω	600mA	1.5Ω	2.2Ω	10Ω	2.2Ω
Test mode	24h/d	2h/d	4m/15m, 8h/d	1h/d	4h/d	4m/15m, 8h/d
End voltage	0.9V	0.9V	0.9V	0.8V	0.9V	0.9V
Unit	h	h	h	h	h	h
Applications	Reference	Portable stereo	Portable lighting	Toy	Radio	Portable lighting
Initial	MAD	17.7	15.5	13.0	23.0	21
	Normal	19.5	17.0	14.7	25.7	23
Stored 1 year	MAD	17.0	14.0	12.0	20.5	20.5
	Normal	18.5	16.0	14.0	24.0	21.5

m: minute h: hour d: day

**internal resistance:** ≤ 0.15 Ω at 1kHz, sine wave measurement  
 (new battery) according to IEC 896-2

**shelf life:** 7 years under proper storage conditions

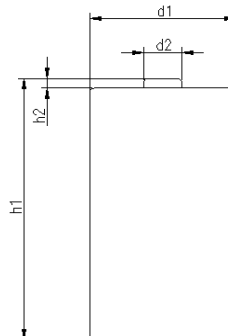
**leakage resistance**  
 over discharge: no leakage 10ohms continuous discharge for 48h; ta: 20°C; RH: 60±15%  
 high temperature: no leakage store 20days at ta: 60°C; RH:90±5%


**ambient temperature range:** - 10...50 °C

recommended storage conditions: 5...25 °C ambient temperature  
 45...75 % rel. humidity

**mechanical specifications**

cell dimensions  
 diameter d1: 33.8 - 1.0 mm  
 diameter d2: 9.5 - 1.0 mm  
 height h1: 61.5 - 1.5 mm  
 height h2: 1.5 + 1.0 mm  
 weight: 142 ± 5 g



	<b>ANSMANN Specifications for model:</b>	<b>Super Quality Alkaline Battery D - size</b>
	author / date	TG / 10.07.2019