

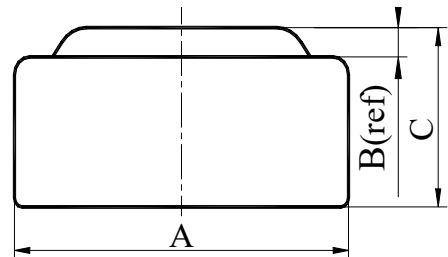


Pollin Electronic GmbH
Max-Pollin-Straße 1
D-85104 Pförring
Tel. +49 (0) 8403 920-920
Fax +49 (0) 8403 920-123
www.pollin.de

TECHNICAL SPECIFICATION

LR1130

Chemical System	: Alkaline manganese button batteries
Model No.	: LR1130 (LR54 AG10 189)
Nominal Dimensions	: $\Phi 11.60 \times 3.10 \text{mm}$
Nominal Voltage	: 1.50V
Average Weight	: 1.11g
Applications	: Watch, Calculator, Electronic toy, etc.
Shelf Life	: Not less than 90% of the service capacity, following 1st year storage at 20°C.
Loading	: 1000 Ω (20°C)
Cut Off Voltage	: 0.90V
Capacity	: 72mAh



Dimensions	Unit: mm
A	11.40----11.60
B	0.40(ref)
C	2.90----3.10

Typical Discharge Characteristics at 20°C

