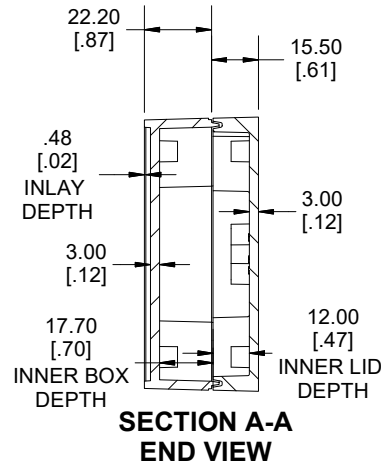
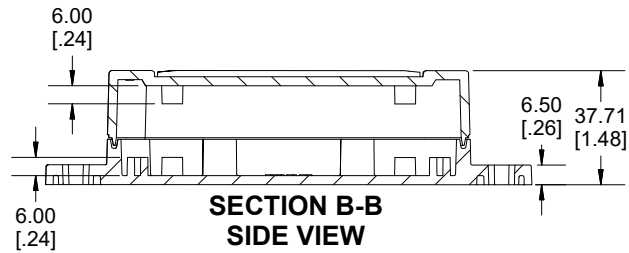
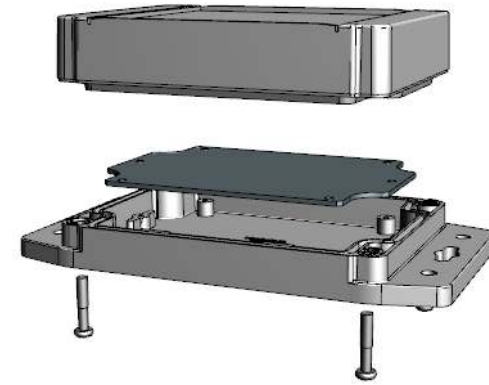


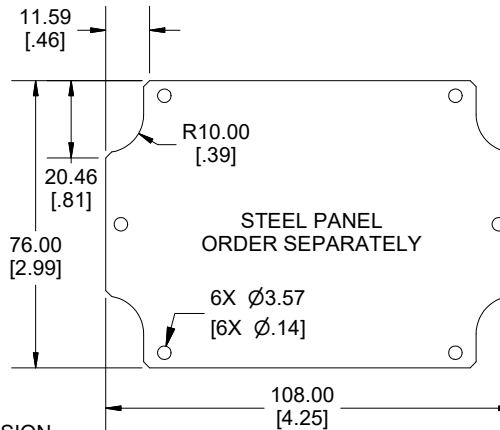
ENCLOSURE ASSEMBLY TOP VIEW



**SECTION A-A
END VIEW**



**SECTION B-B
SIDE VIEW**



**STEEL PANEL
ORDER SEPARATELY**

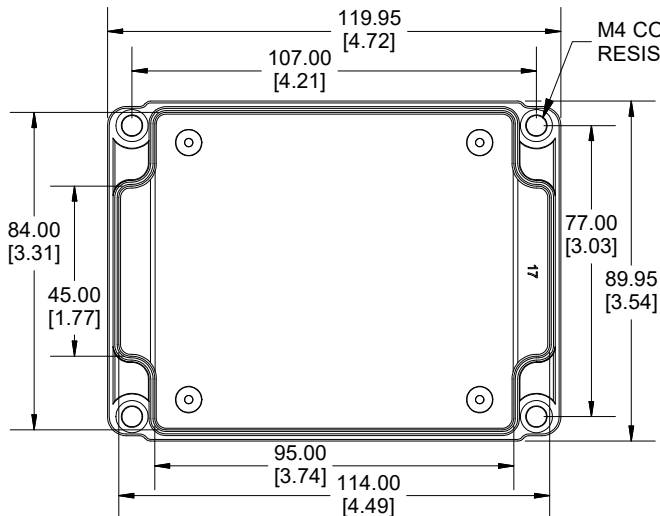


Enclosures can be Factory Modified (Milling, Drilling, Printing etc.)
 Contact Factory (modshop@hammfg.com) for quotes
 Solid models of this enclosure available in .stp or .x_t
 (Part number and text placement/orientation on our products are subject to change,
 we do not recommend using them as a locating reference for modification purposes)

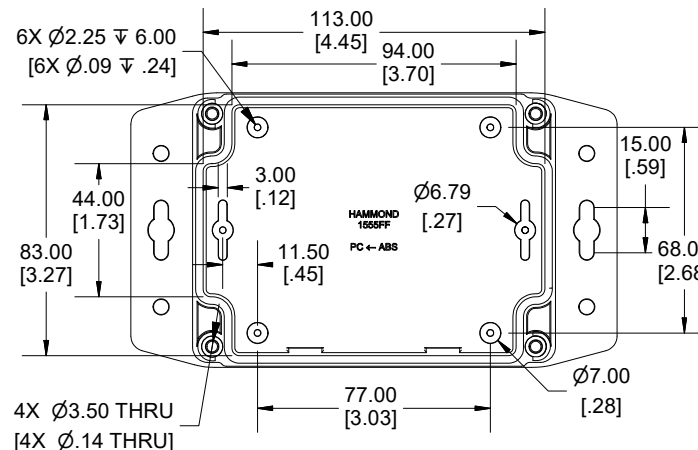
NOTE

Purchased assembly includes styled box, flanged lid, 4 cover screws, and preformed silicone gasket.
 General Purpose ABS version is not UL approved. (Matl UL94 - HB)
 Polycarbonate version is UL 508 approved. (Matl UL94 - 5VA @ 3mm)

Recommended Cover screw torque -- 2.5 lbf-in (30 cN-m)



INSIDE BOX VIEW



INSIDE LID VIEW

| 1555FF | |
|---|-------------|
| 1555FF Regular Enclosure | |
| General Purpose ABS RAL-7035 | 1555FF17GY |
| Polycarbonate RAL-7035 | 1555F2F17GY |
| ACCESSORIES | |
| Steel Inner Panels | 1555FFPL |
| Silicone Pre-formed Gasket Black | 1554FGASKET |
| Steel Panel / P.C. Board Self Tapping Screw [#4 X 1/4" (6.4mm) Plated] | 1555TS100 |
| Stainless Steel Cover Screws [M4-0.7 X 20mm] (Pkg 50) | SC576-50 |

Dimensions:
mm
[inches]

**HAMMOND
MANUFACTURING**
1555FF17
 www.hammondmfg.com