

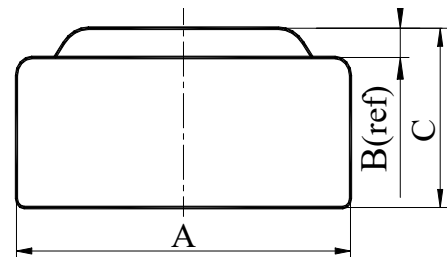


Pollin Electronic GmbH
Max-Pollin-Straße 1
D-85104 Pförring
Tel. +49 (0) 8403 920-920
Fax +49 (0) 8403 920-123
www.pollin.de

TECHNICAL SPECIFICATION

LR626

Chemical System	: Alkaline manganese button batteries
Model No.	: LR626 (LR66 AG4 177)
Nominal Dimensions	: $\Phi 6.80 \times 2.60 \text{mm}$
Nominal Voltage	: 1.50V
Average Weight	: 0.35g
Applications	: Watch, Calculator, Electronic toy, etc.
Shelf Life	: Not less than 90% of the service capacity, following 1st year storage at 20°C.
Loading	: $4700\Omega (20^\circ\text{C})$
Cut Off Voltage	: 0.90V
Capacity	: 18mAh



Dimensions	Unit: mm
A	6.70----6.80
B	0.25(ref)
C	2.40----2.60

Typical Discharge Characteristics at 20°C

