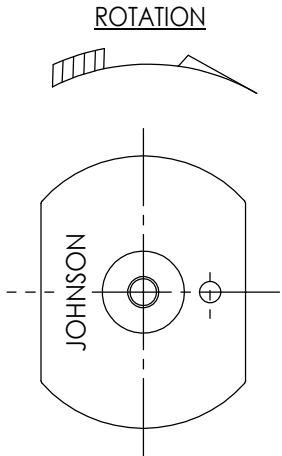
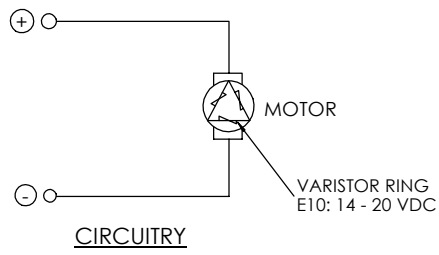
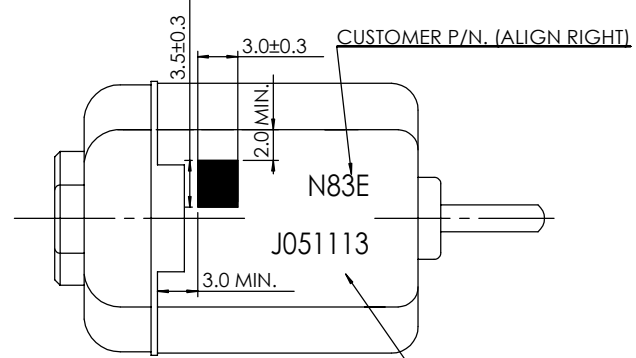
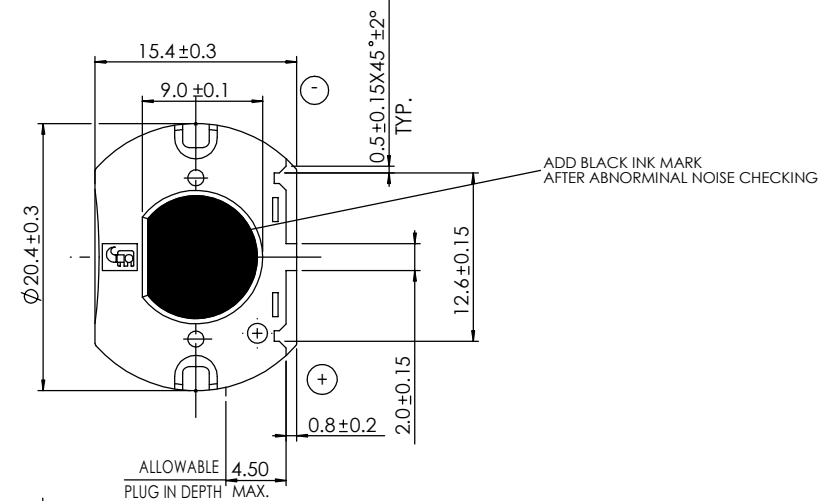
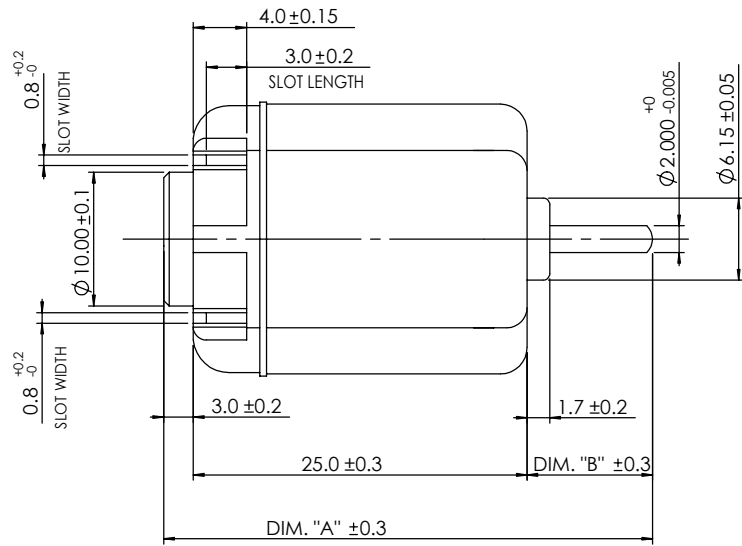


ALT.	REF.	DESCRIPTION	DATE	BY
A	SRF#25532	FIRST ISSUE(SCN#01081116)	20080910	XW



ROTATION



CIRCUITRY

- NOTES :
1. NUMBER OF SLOTS/POLES: 3 .
 2. MAX POWER OUTPUT: 0.848 WATTS REF..
 3. OPERATING TEMPERATURE OF MOTOR: -40 - +85 °C.
 4. LENGTH OF MOTOR, DIM. "A", TO BE 37.4 mm.
 5. FRONT EXTENSION, DIM. "B", TO BE 9.40 mm WHEN MEASURED WITH SHAFT PUSHED AGAINST PLASTIC END CAP.
 6. DIRECTION OF ROTATION : CLOCKWISE WHEN VIEWING MOTOR OUTPUT END WITH POSITIVE VOLTAGE APPLIED TO POSITIVE TERMINAL.
 7. END PLAY : 0.3 mm MAX.

DIRECT PRINT CUSTOMER P/N. & DATE
 CODE ONTO REAR HOUSING.
 DATE CODE FORMAT REFER TO ESDC-038.
 FIRST DIGIT - STAND FOR PRODUCTION YEAR CODE
 EG. J -STAND FOR 2008; K-STAND FOR 2009...
 SECOND & THIRD DIGIT - STAND FOR PRODUCTION WEEK
 FOURTH DIGIT - STAND FOR WEEK DAY
 FIFTH DIGIT - STAND FOR LOT NUMBER
 SIXTH & SEVENTH DIGIT - STAND FOR PRODUCTION LINE CODE

DWN. BY XW	CHK. BY	APP. BY
Date (yyyymmdd) 20080910	Date (yyyymmdd)	Date (yyyymmdd)
MATERIAL :		
FINISH :		
General Tolerance : ISO 2768-1 Class m (Unless specified)		ALL DIMENSIONS ARE IN MILLIMETRES
JOHNSON ELECTRIC JOHNSON ELECTRIC GROUP OF COMPANIES (JOHNSON ELECTRIC)		SCALE 2.5:1
TITLE MOTOR OUTLINE(NF140G)		DWG No. 1999-1010177
SHEET 1 OF 1		

C _{pk}	Characteristics
> 1.67	Key Product
> 1.33	Customer Significant
> 1.00	Not Required